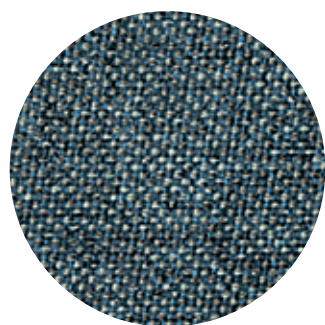
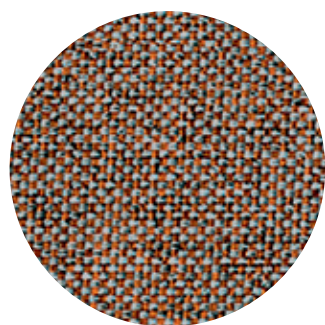


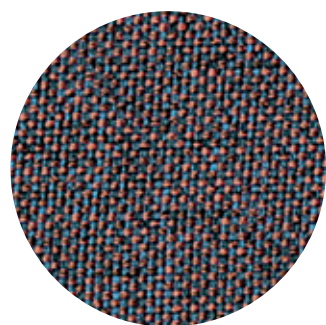
Rivet
Camira



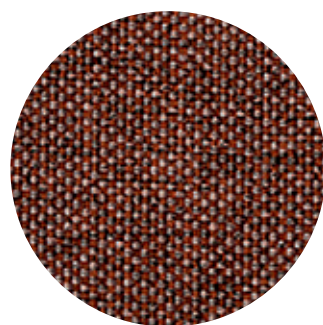
Quench EGL23



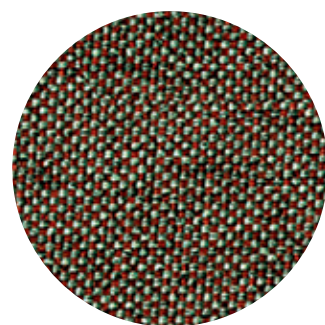
Molten EGL09



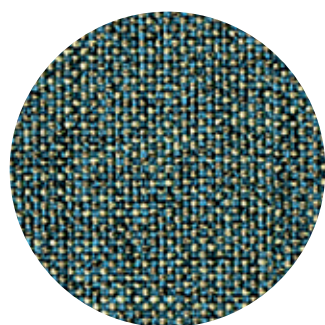
Fuse EGL08



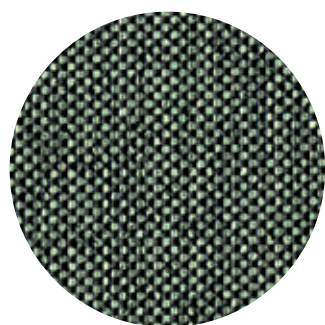
Forge EGL12



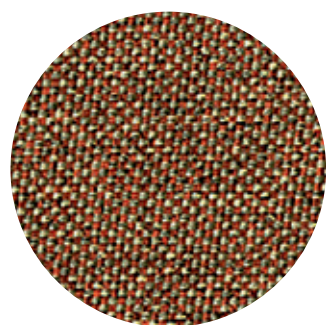
Abraid EGL13



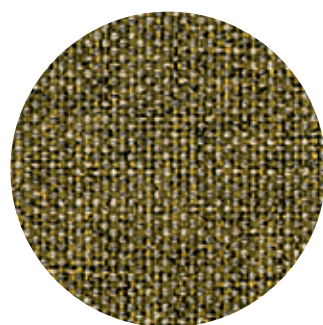
Verdigris EGL21



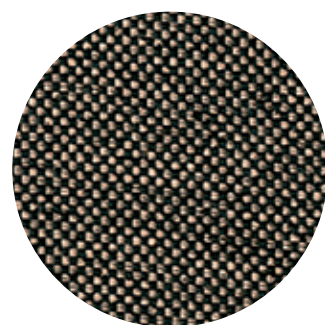
Hemlock EGL34



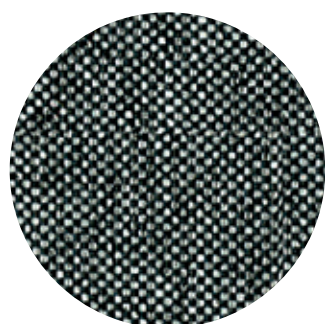
Copper EGL14



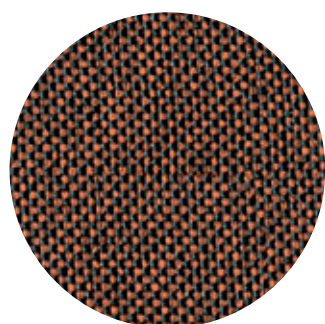
Spark EGL10



Twig EGL49



Grey Brindle EGL50



Deep Clay EGL32

**composizione /
composition:**

100% Polyester (recycled)

**prove /
tests:**

Abrasion resistance:
>50.000 Martindale; Colour
fastness to light UNI EN ISO
105 B02: 6; Colour fastness
to rubbing ISO 105-X12: dry
4, wet 4; Fire resistance: EN
1021 Part 1&2, BS 7176 Low
Hazard.

**note tecniche /
technical notes:**

1 Determinati coloranti di vestiti o di accessori
(es. jeans denim) possono migrare verso i colori più chiari.
Questo fenomeno è incrementato dall'umidità e dalla
temperatura ed è irreversibile. Metalmobil non si assume
nessuna responsabilità per il trasferimento di colorante
causato da contaminante esterno e per le possibili
macchie permanenti causate da questo fenomeno. /
Certain clothing or accessories dyes (such as those
used on denim jeans) may migrate to lighter colors.
This phenomenon is increased by humidity and
temperature and is irreversible. Metalmobil will not
assume responsibility for dye transfer caused by external
contaminants and the possible permanent staining
caused by this phenomenon.

2 Sono ammesse leggere variazioni di colore tra
differenti lotti di produzione dei tessuti. /
Slight color differences may occur between different
production batches.

3 I colori dei tessuti possono variare rispetto ai
riferimenti cromatici forniti nel presente documento
a causa delle inevitabili differenze tra i materiali reali e la
riproduzione tipografica. Per ulteriori informazioni si prega
di contattare l'ufficio commerciale prima dell'ordine. /
Fabric colors may vary from the color references provided
in this document due to the inevitable differences
between real materials and typographical reproduction.
For more information please contact the sales office.

uso e manutenzione

**- pulizia /
use and maintenance
- cleaning:**

Pulire il prodotto con un
panno morbido e umido
utilizzando detergente
neutro. / Clean the product
with a soft, damp cloth and
a neutral detergent.