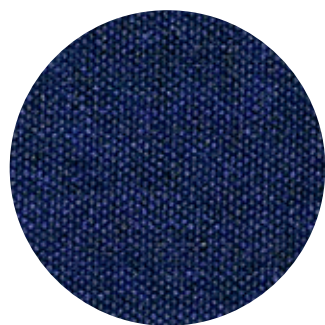
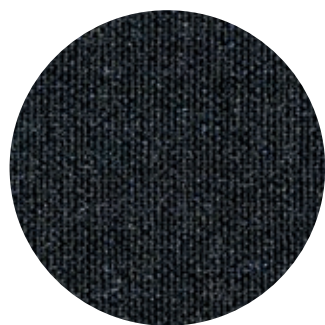


## Remix 2 Kvadrat

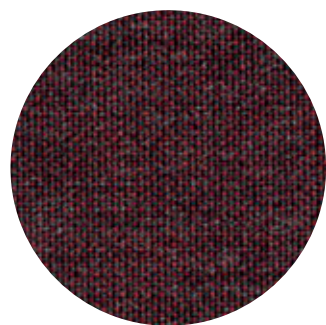
Non utilizzabile per Uni, Uni-Ka e Nassau imbottite /  
Not suitable for upholstered Uni, Uni-Ka and Nassau



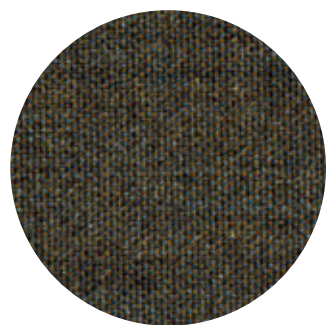
773



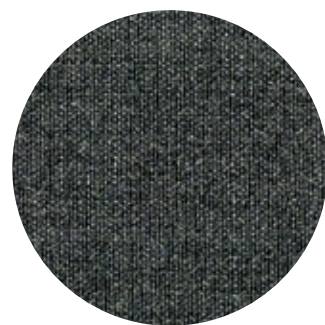
183



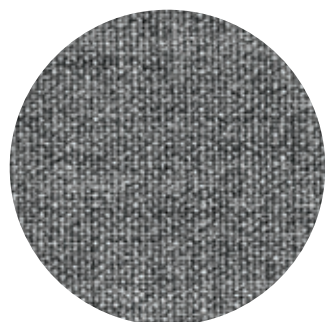
662



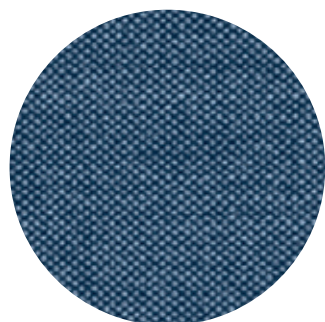
954



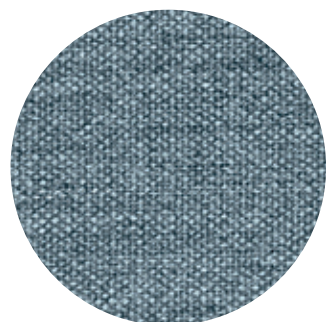
163



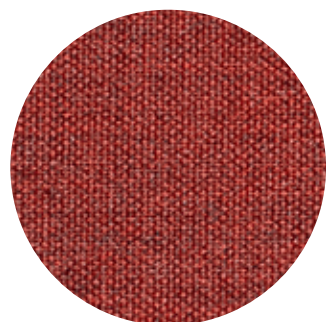
143



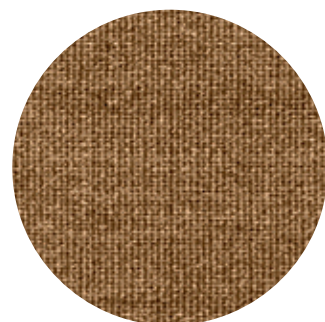
762



733



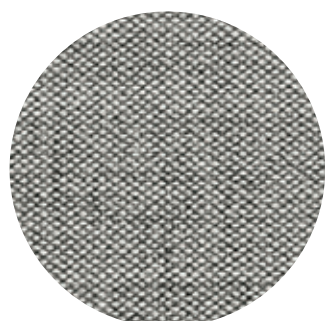
653



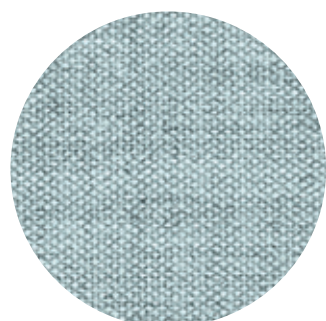
433



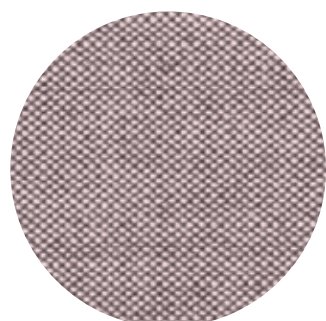
223



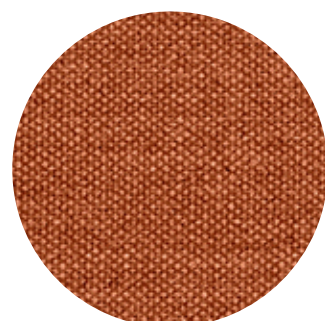
123



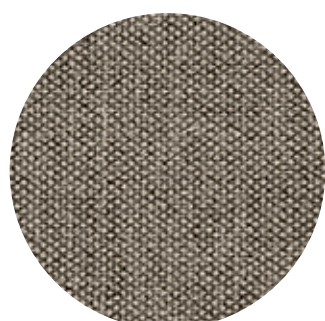
823



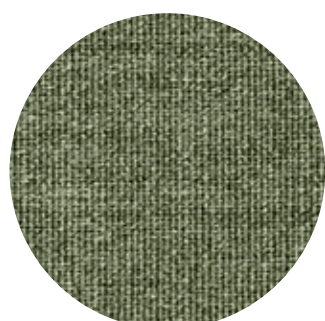
682



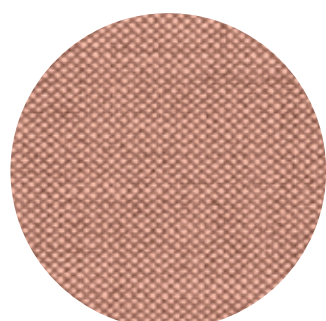
443



233



933



612

### composizione / composition:

90% Wool, 10% Nylon

### prove / tests:

Abrasion resistance  
rubs BS EN ISO 12947-  
2: 100.000 Martindale;  
Pilling EN ISO 12945-2: 4;  
Colour fastness to light  
UNI EN ISO 105 B02: 5/7;  
Fire resistance: EN 1021  
Part 1&2, BS 5852 Part 1,  
ONORM B1/Q1, NF D 60-  
013, UNI 9175 Classe 1.1M;  
US Cal. Bull. 117-2013 AS/  
NZS 1530.3, IMO FTP Code  
2010:Part 8, Crib 5 BS  
5852.

### note tecniche / technical notes:

**1** Determinati coloranti di vestiti o di accessori (es. jeans denim) possono migrare verso i colori più chiari. Questo fenomeno è incrementato dall'umidità e dalla temperatura ed è irreversibile. Metalmobil non si assume nessuna responsabilità per il trasferimento di colorante causato da contaminante esterno e per le possibili macchie permanenti causate da questo fenomeno. / Certain clothing or accessories dyes (such as those used on denim jeans) may migrate to lighter colors. This phenomenon is increased by humidity and temperature and is irreversible. Metalmobil will not assume responsibility for dye transfer caused by external contaminants and the possible permanent staining caused by this phenomenon.

**2** Sono ammesse leggere variazioni di colore tra differenti lotti di produzione dei tessuti. / Slight color differences may occur between different production batches.

**3** I colori dei tessuti possono variare rispetto ai riferimenti cromatici forniti nel presente documento a causa delle inevitabili differenze tra i materiali reali e la riproduzione tipografica. Per ulteriori informazioni si prega di contattare l'ufficio commerciale prima dell'ordine. / Fabric colors may vary from the color references provided in this document due to the inevitable differences between real materials and typographical reproduction. For more information please contact the sales office.

### uso e manutenzione

**- pulizia /  
use and maintenance  
- cleaning:**  
Utilizzare smacchiatori  
a secco.