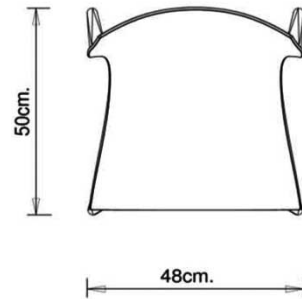
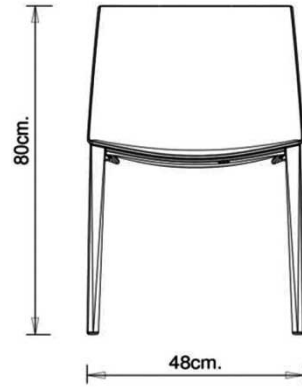


Palau 1020

PALAU COLLECTION:
Palau 1020, Palau 1021,



Monobloc chair in polypropylene made using the injected airmoulding technology.

STACKABLE

6

WEIGHT

3,8 kg

PACK

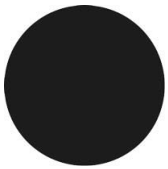
0,32 m³

PIECES PER BOX

4

FINISHES SEATING

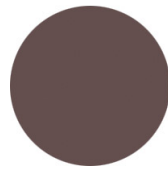
PP POLYPROPYLENE 



RAL 9011
Graphite black
≡



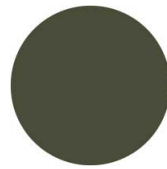
RAL 9010 Pure white
≡



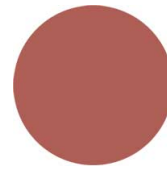
PANTONE 411 C Clay
≡



PANTONE 549 C Dusty blue
≡



RAL 6003
Olive green
≡



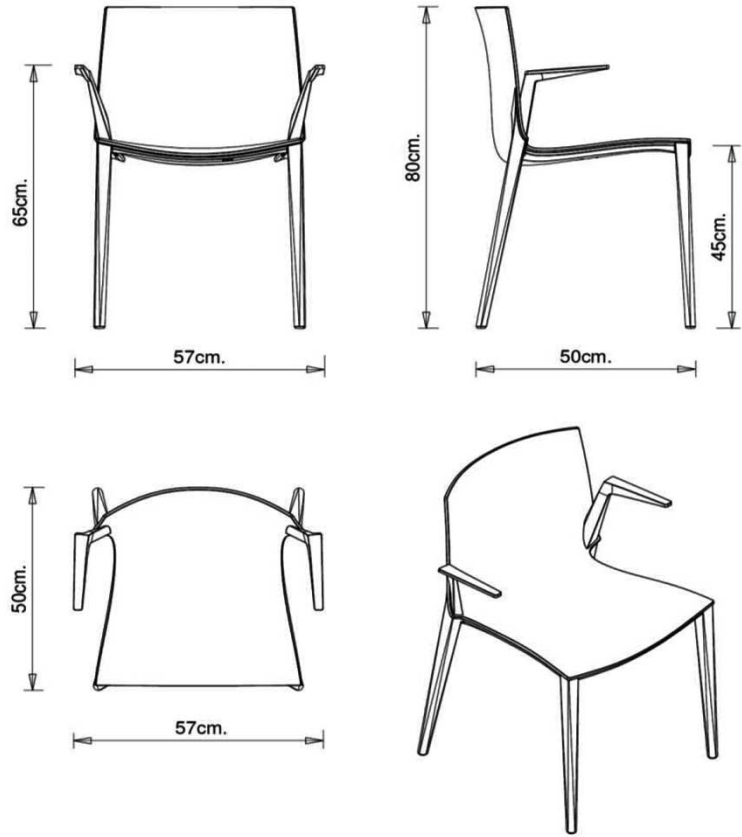
NCS S2060-Y90R
Coral red
≡

USES

coffee & restaurants, travel, retail, outdoor,

Palau 1021

PALAU COLLECTION:
Palau 1020, Palau 1021,



Monobloc armchair in polypropylene made using the injected air-moulding technology.

STACKABLE

6

WEIGHT

4,1 Kg

PACK

0,36 m³

PIECES PER BOX

4

FINISHES SEATING

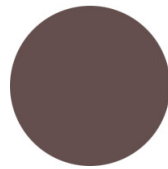
PP POLYPROPYLENE 



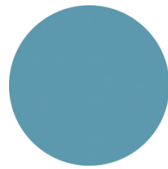
RAL 9011
Graphite black
≡



RAL 9010 Pure white
≡



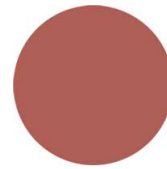
PANTONE 411 C Clay
≡



PANTONE 549 C Dusty blue
≡



RAL 6003
Olive green
≡



NCS S2060-Y90R
Coral red
≡

USES

coffee & restaurants, travel, retail, outdoor,
