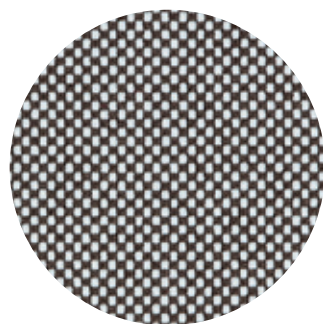
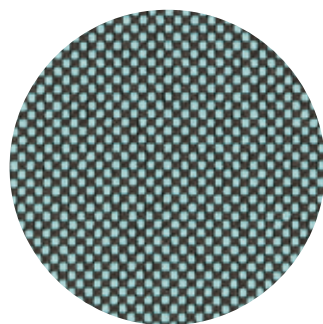


Go-Check
Gabriel

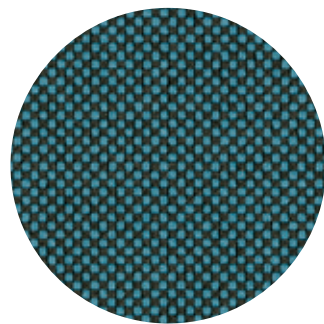
Non utilizzabile
per Uni e Uni-Ka
imbottite /
Not suitable for
upholstered
Uni and Uni-Ka



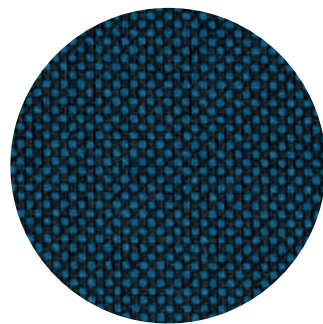
60079



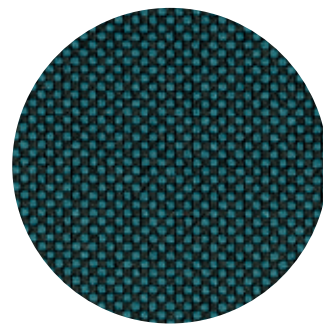
68168



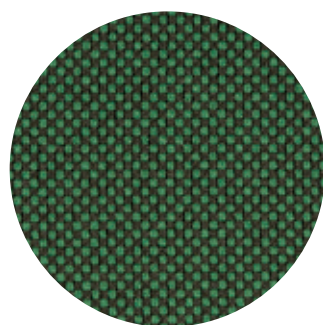
67070



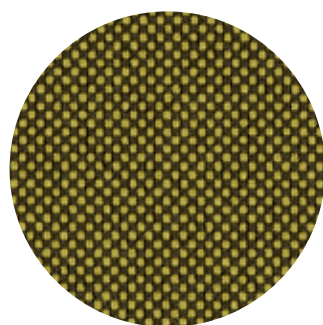
66139



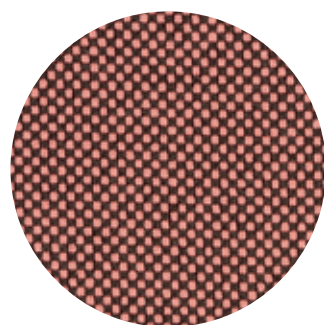
67071



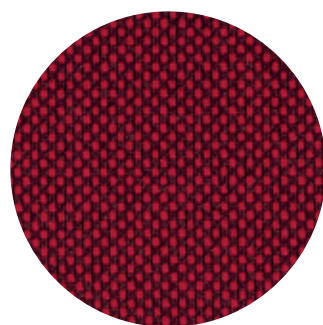
68169



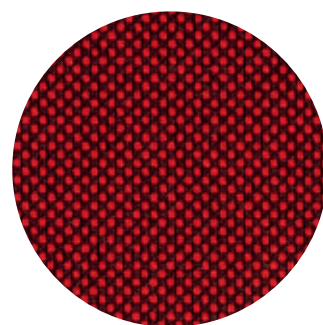
62071



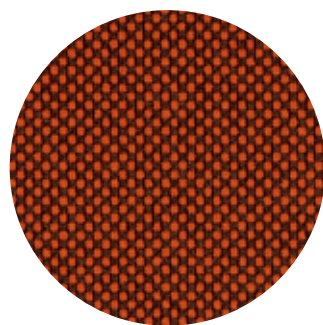
64183



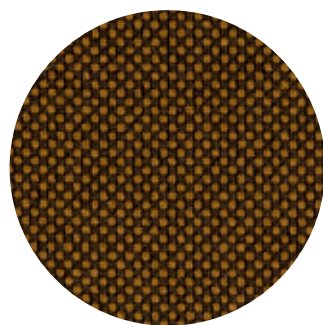
64175



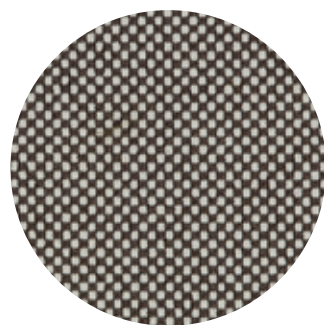
64171



63080



61143



61138

**composizione /
composition:**

100% Trevira GS

**prove /
tests:**

Abrasion resistance
rubs BS EN 14465 - BS
EN ISO 12947-2: 80.000
Martindale; double rubs
Wizenbeek ASTM D4157-
07 (Heavy Duty Upholstery)
60.000; Pilling EN ISO
12945-2: 5; Colour fastness
to light UNI EN ISO 105-
B02: 5/8; Colour fastness
to rubbing ISO 105-X12:
dry 4/5, wet 4/5; Fire
resistance: EN 1021 Part
1&2, BS 5852 O&I, BS 5852
Crib 5, DIN 4102 B1, UNI
9175 Class 1.IM, FAR/JAR
25.853, ONORM B 3825
B1-Q1, NFP92-502-M1, BS
7176 Medium Hazard, DIN
EN 13501-1-B-s1, d0, CA TB
117-2013; US ACT: AATCC
16 Light fastness - pass,
AATCC 8 or 116 wet/dry
crocking-pass, CA TB 117-
2013 - pass, ASTM D4157-
02 WYZ Abrasion (Heavy
Duty Upholstery) - pass,
ASTM D3511 Pilling - pass.

**note tecniche /
technical notes:**

1 Determinati coloranti di vestiti o di accessori
(es. jeans denim) possono migrare verso i colori più chiari.
Questo fenomeno è incrementato dall'umidità e dalla
temperatura ed è irreversibile. Metalmobil non si assume
nessuna responsabilità per il trasferimento di colorante
causato da contaminante esterno e per le possibili
macchie permanenti causate da questo fenomeno. /
Certain clothing or accessories dyes (such as those
used on denim jeans) may migrate to lighter colors.
This phenomenon is increased by humidity and
temperature and is irreversible. Metalmobil will not
assume responsibility for dye transfer caused by external
contaminants and the possible permanent staining
caused by this phenomenon.

2 Sono ammesse leggere variazioni di colore tra
differenti lotti di produzione dei tessuti. /
Slight color differences may occur between different
production batches.

3 I colori dei tessuti possono variare rispetto ai
riferimenti cromatici forniti nel presente documento
a causa delle inevitabili differenze tra i materiali reali e la
riproduzione tipografica. Per ulteriori informazioni si prega
di contattare l'ufficio commerciale prima dell'ordine. /
Fabric colors may vary from the color references provided
in this document due to the inevitable differences
between real materials and typographical reproduction.
For more information please contact the sales office.

**uso e manutenzione
- pulizia /
use and maintenance
- cleaning:**

Pulire il prodotto con un
panno morbido e umido
utilizzando detergente
neutro. / Clean the product
with a soft, damp cloth and
a neutral detergent.