

TALIA, design Francesco Geraci



From Greek Mythology, the stuffed small armchair that expresses the seductive beauty of the muses, among whom is comedy. The charm of the little stuffed chair, therefore takes the form of TALIA: elegant, soft and comfortable. In its concept, it is clean and essential; its polygonal line rereads the rationalistic aesthetic of the neo-organic language. A project where the proportions, soul of the project, provide an easy reading of the totality and ideal placement in the most varied environments.

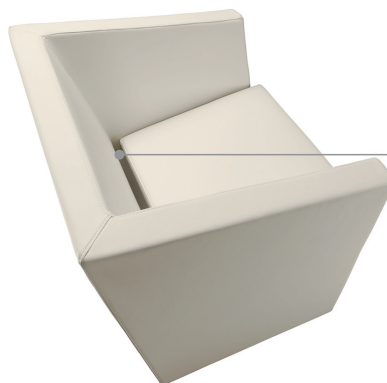
Use: indoor premises

Target: Pastry shop, restaurants, lounge bar, hotels, waiting rooms...



Greater comfort thanks to the structure of the seat realised in multi-layered beech-wood on which a rubber covered belts system engages.

Art. 161



The slot present between the back and the seat confers to Talia a unique design, simultaneously favouring cleaning operations, preventing the depositing of dust and food residue.



Seatback and seat available in a different colour from that of the outside.