

SPOTLIGHT ON THE PREMISE OF THE MONTH...

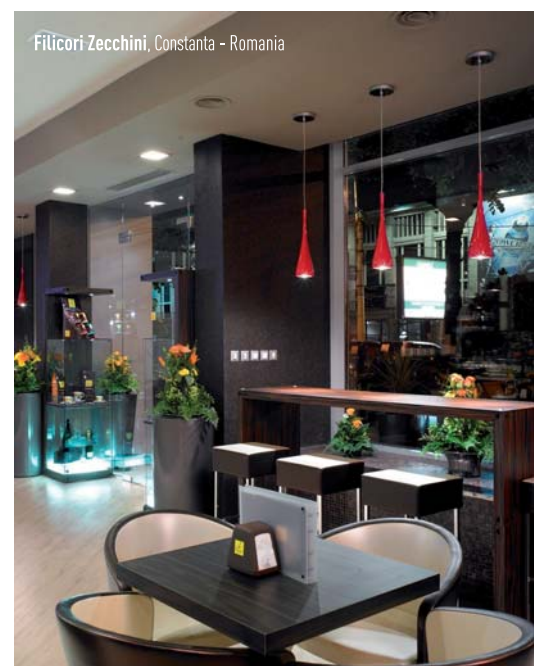
This month we have chosen ...

CAFFE' FILICORI
& ZECCHINI
(realisation in Cesena)



For the Cesena's store, inside the Montefiore Shopping Centre, and that in Constanta, Rumania, Filicori & Zecchini have chosen seats and tables by **Metalmobil** (INDUSTRIEFI Group). "With great satisfaction", explains Luca Filicori of the G.I.Fi.Ze. S.p.A. Filicori & Zecchini Industrial Group, "we have identified the **Kicca** armchair, **Twin** stools and the **XT** tables by Metalmobil as the perfect products to represent our image in the world. In harmony with the concept of our premises, the seating solutions and the tables by Metalmobil bring elegance and refinement as well as an image of functionality: day after day they prove to be durable and reliable products. Indeed our venues are in high-traffic density locations. The seats and tables undergo notable stress, therefore it is extremely important that they be sturdy and that they maintain their beauty over time".

First opened in 1919, Filicori & Zecchini is one of the oldest coffee roasters in Italy. In order to spread the culture of authentic Italian Espresso throughout the world, Filicori & Zecchini has recently launched an important project for the Licensing of Branded Cafés, bringing its own brand, paradigm of excellence and reliability, abroad as well. Italy, Saudi Arabia, Rumania, Qatar and Syria are some of the first stops of a constantly growing project, that is counting on the impeccable quality of its certified coffee blends as well as on the refined elegance of its coordinated image. The Filicori & Zecchini stores are known for the warmth and welcoming atmosphere of their environments, where every element responds to well defined principles of design and planning, such as the knowledgeable combination between modularity of the functional elements and the elegance of the décor, dynamic flooring solutions in stone and parquet and a scrupulous lighting design.



TAKE A LOOK AT THE
TECHNICAL SHEET



METALMOBIL for Café Filicori e Zecchini (realisation in Cesena)



KICCA design Francesco Geraci

KICCA

The Filicori & Zecchini Café has chosen the chromed four-leg **KICCA** armchair, while for the seat covering and the backs Metalmobil created a special configuration - Kicca armchairs with fabrics made especially and exclusively for the G.I.Fi.Ze. firm.



Art 020 > 62 46 57 76 AC TE

SPECIFIC CHARACTERISTICS:

KICCA is an elegant and sturdy seat that guarantees optimal comfort and ergonomics altogether. Thanks to its timeless lines **Kicca** is synonymous with style. **Kicca** is available also with branches (article 021) and with stainless steel base and central column (article 019).

TWIN

The Filicori & Zecchini Café has chosen the **TWIN** stools with chromed steel tubes in squared sections and fabric from the Metalmobil cloth sample assortment.



Art 368 > 36 36 76 AC TE

SPECIFIC CHARACTERISTICS:

TWIN is a stool with clean and straight lines, comfortable, practical and easy to handle, and just as easy to insert in any décor solution. The **Twin** stool is available in the low 48-cm version as well (article 369).



TWIN design Metalmobil Concept

XT

The Filicori & Zecchini Café has chosen the **XT** tables article 479 Q with centre column in polished stainless steel and 60x70 cm laminate tabletop with the S2 edge.



Art 479 Q > 72 40x40 AX 8x8 AX/LE 60x60 70x70 Ø 60 Ø 70

Table tops finishes:
Acciaio Inox/ Gres/ Veneered
Laminate /Werzalit

SPECIFIC CHARACTERISTICS:

The **XT** family of tables is characterised by its column and base-cover in polished and satined stainless steel. **XT** features a minimalist design especially conceived to allow for maximum freedom of association of the table with different types of Metalmobil seating.



XT design Metalmobil Concept